

MMJ-S

# Specifications

	0.36 L type	0.48 L type	0.60 L type
Capacity *1	0.36 L / 12.2 oz	0.48 L / 16.2 oz	0.60 L / 20.3 oz
Heat retention (1 hour) *2 (6 hours)	Greater than 85°C / 185°F Greater than 62°C / 143°F	Greater than 86°C / 186°F Greater than 67°C / 152°F	Greater than 87°C / 188°F Greater than 71°C / 159°F
Cold retention (6 hours) *3	Less than 9°C / 49°F	Less than 8°C / 47°F	Less than 7°C / 45°F
Size *4	W 6.6×D 7.2×H 17.6 cm W 2.60×D 2.83×H 6.93 inch	W 6.6×D 7.2×H 21.8 cm W 2.60×D 2.83×H 8.58 inch	W 6.6×D 7.2×H 26.0 cm W 2.60×D 2.83×H 10.24 inch
Weight *4	0.17kg / 0.37 lbs	0.19kg / 0.42 lbs	0.23kg / 0.51 lbs

\*1 Capacity is the actual volume of water that can be stored in the product when the stopper is closed.

This is not the "Maximum level" volume described in "Safety Precautions".

\*2 Heat retention has been calculated under the condition of adding hot water at 95°C ±1°C / 203°F±2°F and leaving it in a room temperature of 20°C±2°C / 68°F±4°F for 1hour or 6hours.

\*3 Cold retention has been calculated under the condition of adding cold water at 4°C ±1°C / 39°F±2°F and leaving it in a room temperature of 20°C±2°C / 68°F±4°F for 6hours.

\*4 Approximate value

## Replacing and Purchasing Consumable Parts

The stopper is consumable part. Check once a year for damage/deterioration.

If heavily stained or loose, replace them.

For replacement parts, contact customer service or the shop where you purchased this product.

## Before Contacting Customer Service

The utmost measures have been taken to ensure the quality of this product. However, should the product be defective, contact your dealer and provide the following information.

1. Product name
2. Model Number (bottom of the product)
3. Description of trouble (As detailed as possible)
4. Purchase date

Feel free to send any questions or comments about this product to the shop where you purchased it.

\* For the purpose of performance improvement, designs, specifications and parts shown in this publication are subject to change without notice.



**TIGER CORPORATION**

Head Office: 3-1 Hayami-cho, Kadoma City, Osaka 571-8571, Japan

## TIGER CORPORATION HONG KONG LIMITED

Rm. 1006B, 10/FI., Join-in Hang Sing Centre, 71 - 75 Container Port Road, Kwai Chung, N.T.

Tel: (852) 2418-0912 Fax: (852) 2418-0911

URL : <https://tiger-corporation.hk>

## TIGER CORPORATION U.S.A.

1815 W 205th Street, Unit 106, Torrance, CA 90501

Tel: 1-866-55-TIGER (84437)

Email: [support@japantigercorp.com](mailto:support@japantigercorp.com)

URL : <https://tiger-corporation.com/en/usa>



MODEL  
**MMJ-S**

For household use

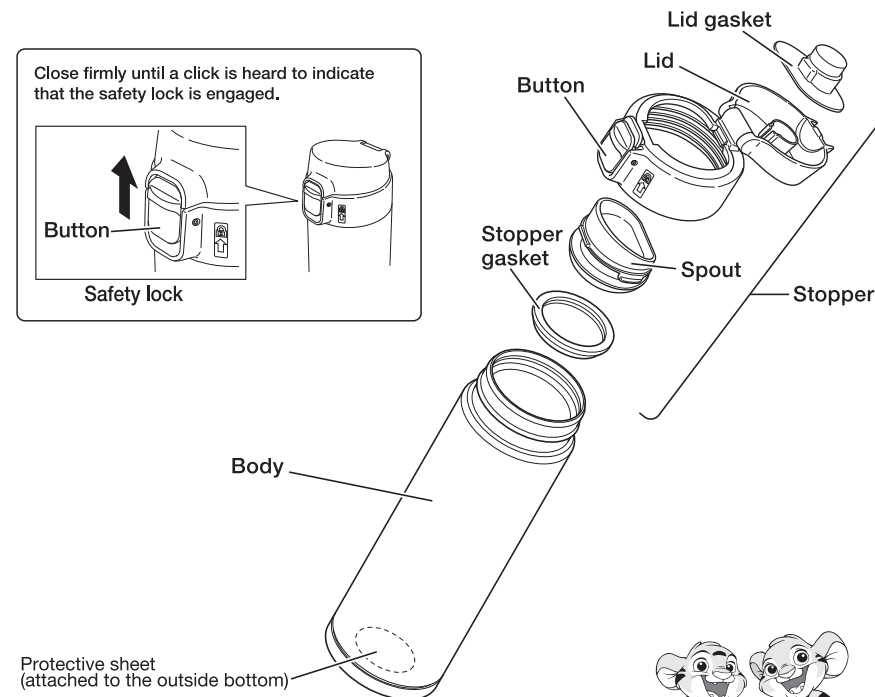
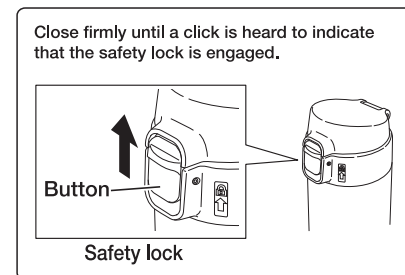
# Vacuum Insulated Bottle

## Instructions

Thank you for purchasing a "TIGER" Vacuum Insulated Bottle.

Please read the instructions completely before use.

Keep these instructions for future reference.



\*Make sure that all parts are present before use.



# Safety Precautions

Be sure to follow all instructions.

- ◆ All safety instructions described below are intended to protect the user and other individuals from physical harm and household damage.
- ◆ Safety instructions are classified and described according to the level of harm and damage caused by improper use, as shown below.



This symbol indicates there is a possibility of death or serious injury.



This symbol indicates there is a possibility of injury or damage to property.

## Description of Symbols



This symbol indicates a prohibited action.



This symbol indicates an action that must be taken or an instruction that must be followed.

## Warning



**Keep out of reach of children.**

**Do not allow children to play with the product.**

There is a risk of burns\* or other injuries.

\* When used products that can keep hot.



## Caution



**Do not disassemble or attempt to repair this product.**

There is a risk of product failure or accident.



**Do not place the product on its side.**

The contents may spill out. When putting the product in a bag or other container, place the product in an upright position.



**Do not use the product to hold anything other than beverages.**

If drank by accident, there is a risk of burns\* , other injuries, or other damage.

\* When used products that can keep hot.



**Do not use the product if you can hear water moving around\* within the double-layer vacuum structure (vacuum layer) of its body.**

Drinking from the product may cause you to feel unwell if water from the vacuum layer seeps into the interior of the product. In the case of the heat retention type, there is a risk of burns caused by the body heating up when hot beverages are poured into the product.

\*A rattling sound may be heard when shaking its body. This is caused by rubbing of metallic foil placed inside the body to improve the heat retention effect, but it poses no problems with respect to usage.

<How to check heat retention effect>

Fill the body with hot water and touch the center of the bottom of the body after about five minutes. If the body is hot, discontinue use of the product, as it has no heat retention effect.



**Do not place the product near stoves, open flames, or other sources of extreme heat.**

There is a risk of burns or deformation or discoloration of the product.



## Caution



**Do not heat the product in a microwave oven.**

There is a risk of failure of the microwave due to sparking. There is also a risk of burns or deformation or discoloration of the product.



**Do not use the product while the spout is removed.**

The beverage will spill out and cause burns\*.

\* When used products that can keep hot.



**Do not put the product in a freezer.**

The beverage may leak, the product may be damaged, or the performance of the product may decrease.



**Do not knock over, drop, or strike the product or expose it to excessive shocks or vibration.**

There is a risk of damage to the product, reduction of its performance, rusting, paint/printing/plating peeling\*, or leakage of contents.

\* For products that are painted, plated, or include printing.



**Do not remove the protective sheet applied to the bottom of the product.**

Removing it may decrease the product's performance.



**Do not scratch or rub the body, parts, or seals with fingernails or hard objects.**

Doing so may cause damage or peeling.



**Do not use the product in a moving vehicle.**

This may result in burns\* or soiling of clothes or of the interior of the vehicle. Using the product while you are driving is very dangerous, as you may be distracted.

\* When used products that can keep hot.



**Do not use the product if its ability to retain heat declines.**

Hot beverages can make the product very hot, potentially causing burns.



**Do not pour a beverage into the bottle while the stopper is in place.**

The beverage may overflow or spill, causing burns\* or injuries to the skin. It may also cause scratching or deformation of the product.

\* When used products that can keep hot.

# Safety Precautions

Be sure to follow all instructions.

## ⚠ Caution

- ⊘ **Never put the following things in the product.**
  - **Dry ice, carbonated beverages, etc.**

The pressure inside the product may increase, causing the stopper or lid to become stuck, the beverage to spray out, or parts to be damaged and fly off, resulting in injuries or stains.
  - **Milk, dairy products, certain fruit juices, etc.**

The contents may decay or spoil. Leaving such beverages inside the product may create gases that raise the pressure inside the product. This can cause the stopper or lid to become stuck, the contents to spray out, or parts to be damaged and fly off, resulting in injuries or stains.
  - **Soups or beverages containing large amounts of salt.**

The contents may decay or spoil, the product may rust, or the performance of the product may decline.
  - **Tea leaves, peeled fruit, etc.**

They may cause clogging, resulting in leakage.
- ⊘ **Do not put the product in a bottle sling, bottle boot or bag when its body is wet.**

There is a risk of rust, odors, or stains.
- ⊘ **Do not carry together with a PC, mobile phone, digital camera, or other electronic device.**

If the beverages leak, it could cause damage and malfunctions in electronic devices.
- ⊘ **If the product contains a hot beverage, do not open or close the stopper or lid if the product is tilted or placed near your face.**

This may cause the internal pressure of the product to increase and the contents to spray out and scatter, potentially causing burns or stains.
- ⊘ **Do not use chlorine bleach.**

Doing so may result in rust, paint/printing/plating peeling\*, or holes.  
\* For products that are painted or include printing or plating.
- ⊘ **Do not use paint thinner, benzene, metal scrubbing brushes, polishing powder, cleansers, or similar substances.**

Doing so may result in rust, scratches, or poor performance.
- ⚠ **When using the product, check that the lid gasket and stopper gasket are attached and that there is no leakage of the beverage.**

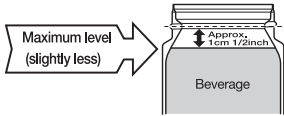
There is a risk of the contents leaking, causing burns\* or stains. If leakage occurs, parts (lid gasket, stopper gasket, etc.) may not be attached correctly, the stopper may not be attached securely, or the product may be damaged.  
\* When used products that can keep hot.
- ⚠ **Install only the parts intended for use with the product.**

If any other parts are installed, there is a risk that the contents may leak, causing burns\* or stains.  
\* When used products that can keep hot.

## ⚠ Caution

- ⚠ **Be careful not to tip over the product when pouring beverages into it.**

The beverage will spill out, and there is a risk of burns\*, injuries, scratches, or deformation.  
\* When used products that can keep hot.
  - ⚠ **Be sure to only fill the product up to the maximum level shown in the diagram.**

If the contents exceed the specified level, they may overflow and cause burns\* or stains.  
\* When used products that can keep hot.
- 
- ⚠ **If the product contains a hot beverage, drink slowly and do not tilt the product abruptly.**

Tilting the product abruptly may cause the contents to come out too fast, potentially causing burns.
  - ⚠ **Attach the stopper securely with the product in an upright position and check that the safety lock is engaged.**

There is a risk that the beverage may leak, causing burns\* or stains.  
\* When used products that can keep hot.
  - ⚠ **Observe the following when placing the product in automobile drink holders.**
    - Check that the product fits stably in the holder and that the holder is sufficiently strong.
    - When using an aftermarket drink holder, use a stationary type.

If the product falls over or tilts or the drink holder breaks or is damaged, there is a risk of burns\*, injuries, accidents, or soiling of property and the interior of the vehicle.  
\* When used products that can keep hot.  
\* The product may not fit depending on the vehicle model or type of drink holder.
  - ⚠ **Consume beverages as soon as possible.**

If they are left in the bottle for a long time, gases may be generated due to spoilage, raising the pressure inside the product and causing the stopper or lid to become stuck or the beverage to spurt out. Furthermore, parts may be damaged and fly off, causing injuries and stains.
  - ⚠ **Be sure to wipe off any liquid on the spout.**

The contents may leak when the stopper or lid is closed.
  - ⚠ **Be sure to clean the product immediately after use.**

**Even if you are out and cannot clean it fully, immediately rinse out the inside of the product with water after use.**  
Failure to do so may result in mold, rust, holes, or other problems.

Due to the structure of the product, condensation may occur if cold beverages are put in it, generating water droplets on the stopper.

# How to Use

## Before the first use

### ● Cleaning

You may notice an unusual odor coming from the material of the product. In this case, clean the product by following the steps below.

- (1) Check that the spout is securely attached.
- (2) Check that the lid gasket and stopper gasket are attached to the stopper.
- (3) Pour hot water into the body and securely close the stopper and lid.
- (4) Hold the body and gently shake it several times to rinse the inside thoroughly. (Do not shake it excessively. The hot water may splash out, potentially causing burns.)
- (5) Discard the hot water, and then clean each part.

### 1 Turn the stopper to remove it.

- Check that the lid gasket, stopper gasket and spout are attached to the stopper.

### 2 To keep your beverage warm/cool longer, first pour a small amount of hot/cold water into the body and let it sit for one or two minutes.

- Discard the hot/cold water after preheating/precooling.

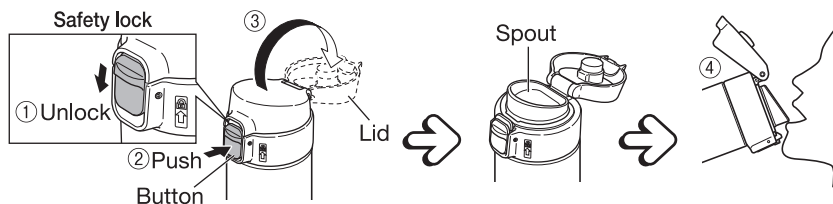
### 3 Pour your hot/cold beverage into the body.

- Pour appropriate amount of beverages.
  - Do not insert large cubes of ice. Use small cubes or crushed ice.
- \* Due to the structure of the product, condensation may occur if cold beverages are put in it, generating water droplets on the stopper.

### 4 Place the body in an upright position and turn the stopper to close it.

- Check that the spout is securely attached.
- Turn the stopper as far as it will go to securely close it.

### 5 Slide down the safety lock, push the button to open the lid, and then drink beverage.



### Caution

- Do not push the button while tilting the body. The hot beverage may splash out of the bottle.

- Do not tilt the body immediately after pouring in a hot beverage and closing the lid. The contents may leak.

### 6 After drinking the beverage, keep the product in an upright position and securely close the lid. Slide up the safety lock.

- Close firmly until a click is heard to indicate that the safety lock is engaged.

### Caution

- Make sure the product does not suffer any strong impact while carrying it. The lid may open from strong impacts, even when the safety lock is locked.
- If you place the product in a bag, make sure it is upright. The product may leak if you place it on its side.

## How to Clean

- ◆ Clean the product on the same day after every use.
- ◆ Use mild kitchen detergent (for table or cookware).
- ◆ Use a soft sponge or cloth.
- ◆ Clean the product thoroughly to prevent any odor.

(1) Wash each part using a sponge with diluted detergent water or lukewarm water, and then thoroughly rinse it with water.

(2) Wipe the water off with a dry cloth and dry the parts thoroughly.

### Caution

- After washing the whole body, immediately use a dry cloth to wipe off the moisture on its outer surface. Not wiping off all droplets could leave water stains or cause rust and other marks.
- Do not soak the body and stopper when washing them. Water may enter. (Except gaskets)
- Do not use thinners, cleansers, bleaches, cleaning wipes, metallic scrubbing brushes, or nylon scrubbing brushes.
- Do not use a dishwasher or dish dryer, and do not wash with boiling water. (The body and gaskets can be washed in a dishwasher and dryer.)
- Be sure to attach the gaskets and spout.
- Do not use boiling water. (This does not apply to the inside of the body or the gaskets.)
- Dry the body and stopper completely after removing stains when not in use for a long time.

### If an odor remains on the gasket

Depending on the contents, the odor may remain on the gasket. In this case, leave the gasket in boiling water for approximately 30 minutes to reduce the odor. If the odor is still noticeable, purchase a new gasket (sold as an optional part).

# How to Clean

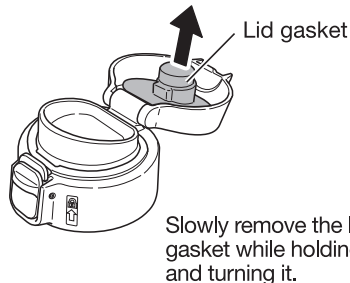
## Removing and attaching the gasket

### Caution

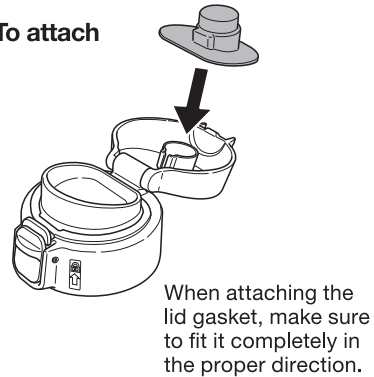
- Do not attach the gasket in the incorrect place or direction. The contents may leak.

## Removing and attaching the lid gasket

### To remove

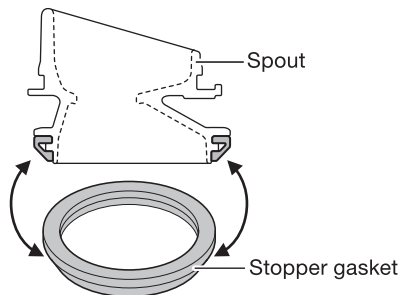
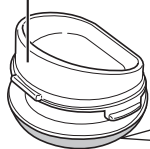


### To attach



## Removing and attaching the stopper gasket

Spout

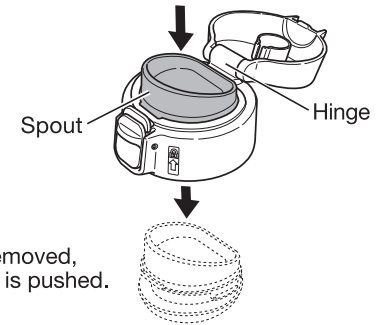


Slowly remove the stopper gasket while holding its edge. When attaching the stopper gasket, make sure to fit it completely in the proper direction.

## Removing and attaching the spout

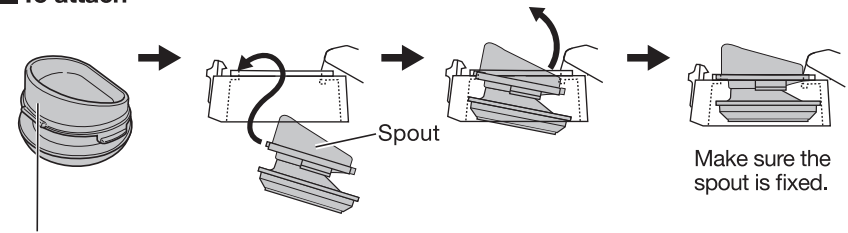
### To remove

Push the hinge side slowly to remove.



Spout can not be removed, even if its front side is pushed.

### To attach



After fitting the front side of spout, set the hinge side.

## If marks start to become visible on the inside of the body

### For red, rust-like spots or rough areas

Such staining can be caused by minerals in water, such as calcium, magnesium, and iron. It is recommended to clean them with citric acid, which is available at supermarkets and drug stores.

- (1) Dilute the citric acid (approximately 10 g) in lukewarm water, and then pour it into the body.
- (2) After a few hours have elapsed, wash the body with a soft brush and then thoroughly rinse it.
- (3) Dry the body completely.

Note: Do not use detergents for other brands' pots or insulated bottles. The gasket may be broken.