

## Replacing and Purchasing Consumable Parts

The gasket and stopper are consumable parts. Check once a year for damage/deterioration.

If they are heavily stained or loose, replace them.

For replacement parts, contact customer service or the shop where you purchased this product.

## Before Contacting Customer Service

The utmost measures have been taken to ensure the quality of this product. However, should the product be defective, contact your dealer and provide the following information.

1. Product name
2. Model number (bottom of the product) • Type of stopper
3. Description of trouble (As detailed as possible)
4. Purchase date

Feel free to send any questions or comments about this product to the shop where you purchased it.

※ For the purpose of performance improvement, designs, specifications and parts shown in this publication are subject to change without notice.



### TIGER CORPORATION

Head Office: 3-1 Hayami-cho, Kadoma City, Osaka 571-8571, Japan

### TIGER CORPORATION HONG KONG LIMITED

Rm. 1006B, 10/FI., Join-in Hang Sing Centre, 71 - 75 Container Port Road, Kwai Chung, N.T.

Tel: (852) 2418-0912 Fax: (852) 2418-0911

URL : <https://tiger-corporation.hk/>

### TIGER CORPORATION U.S.A.

1815 W 205th Street, Unit 106, Torrance, CA 90501

Tel: 1-866-55-TIGER (84437)

Email: [support@japantigercorp.com](mailto:support@japantigercorp.com)

URL : <https://tiger-corporation-us.com>



For household use

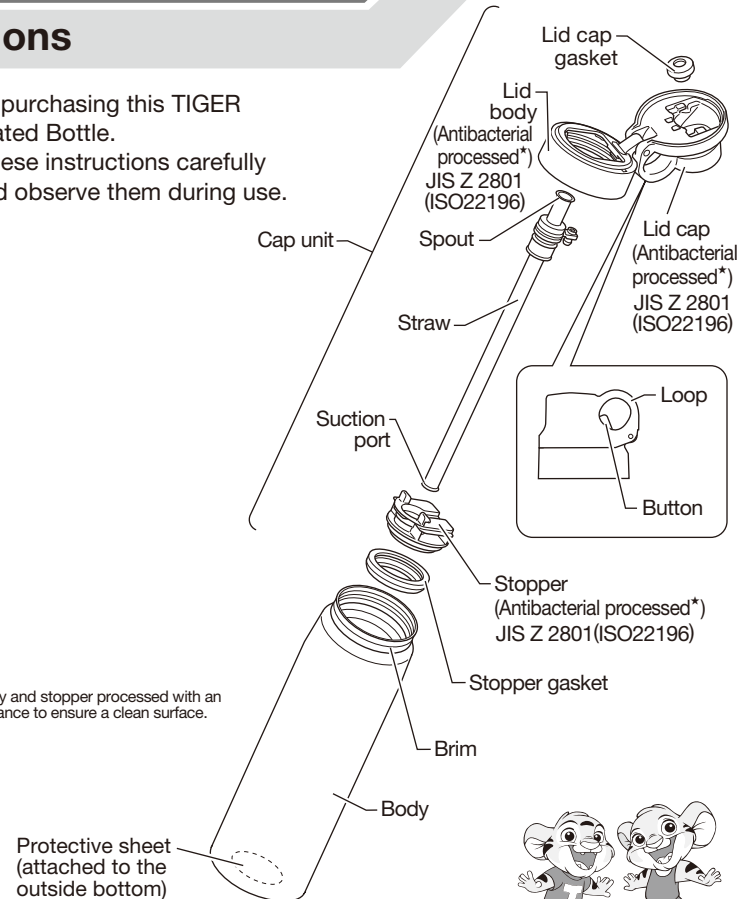
MODEL  
**MCS-A ②**

## Vacuum Insulated Bottle

Cold drinks only

### Instructions

Thank you for purchasing this TIGER Vacuum Insulated Bottle. Please read these instructions carefully before use and observe them during use.



\* Lid cap and lid body and stopper processed with an antimicrobial substance to ensure a clean surface.

\*Make sure that all parts are present before use.



© 2003 TIGER CORPORATION

# Safety Precautions

Be sure to follow all instructions.

- ◆ All safety instructions described below are intended to protect the user and other individuals from physical harm and household damage.
- ◆ Safety instructions are classified and described according to the level of harm and damage caused by improper use, as shown below.



This symbol indicates there is a possibility of death or serious injury.



This symbol indicates there is a possibility of injury or damage to property.

## Description of Symbols



This symbol indicates a prohibited action.



This symbol indicates an action that must be taken or an instruction that must be followed.

## Warning



**Keep out of reach of children. Do not let children play with the product.**

There is a risk of injuries.



**Do not walk with the straw in your mouth.**

There is a risk of injuries if you fall.

## Caution



**Do not put hot beverages in the product.**

Hot beverages may spill over from the straw, and may in turn result in burns and/or spill onto other materials. There is a risk of burns if you drink hot beverages through the straw.

**Do not put dry ice or carbonated beverages in the product.**

The air pressure inside the product may increase, causing the stopper to become stuck or prone to shattering, or the parts to be damaged.

**Do not place the product near stoves, open flames, or other sources of extreme heat.**

There is a risk of burns or deformation or discoloring of the product.

**Do not store milk, dairy products, or certain fruit juices in the product.**

The contents may decay or spoil. Long-time spoilage can create gases that raise the air pressure inside the product due to decay or spoil, causing the stopper to become stuck or prone to shattering, or the parts to be damaged.

**Do not heat the product in a microwave oven.**

There is a risk of injury or failure due to sparks.

**Do not touch the brim of the product with a kettle spout.**

The product may fall over, causing injuries, or scratching and deformation to the product.

**Do not use the product for any purpose other than keeping beverages cold for drinking.**

## Caution



**Do not knock over, drop or expose the product to excessive shocks.**

There is a risk of damage to the product, a reduction of its cold-retention ability, rusting, peeling of its paint/printing/plating\*, or leakage of contents.

\* Limited to products with processing such as painting, printing and plating.

**Do not disassemble or attempt to repair the product by yourself.**

There is a risk of failure or accident.

**Do not put the product in a freezer.**

Contents may leak or the product may be damaged.

**Do not store tea leaves or peeled fruit.**

The contents may leak.

**Do not store soups or beverages containing salt in the product.**

The product may become decayed, spoiled, or rusted.

**Do not use the product if you can hear the sound of water from inside the vacuum double-layer structure (vacuum layer) of the body.**

If water in the vacuum layer seeps out, it may cause health problems if ingested.



**Do not leave the product in a bag for a long time.**

The storage conditions may change and there is a risk of rust or odors.

**Do not place the product in a bag if its exterior is wet.**

There is a risk of rust, odor, or soiling.

**Do not use chlorine-based bleaches.**

Causes of rust, paint/printing/plating peeling\*, and holes.

\* Limited to products with processing such as painting, printing and plating.

**Do not scratch or rub the surface of the body, resin parts, or seals with nails or hard objects.**

Causes of damage and peeling.

**Do not use the product in a moving vehicle.**

This may result in soiling of clothes or of the interior of the vehicle. (Using the product while you are driving is very dangerous, as you may be distracted.)

**Do not pour the beverage into the bottle while the cap unit is set.**

The contents may leak or the product may fall over, causing injuries. The product may also be scratched or deformed.

**Do not carry together with a PC, digital camera, or other electronic device.**

If the contents leak, the electronic device may be damaged or malfunction.

**Do not remove the caution sticker on the base of the product.**

If it is removed, there is a risk of diminished cold-retention performance.

**Do not wave the product in the air while holding the loop on the lid cap.**

The product may hit and injure someone or damage something.

**Do not vibrate or create any impact with the product while holding the loop on the lid.**

There is a risk of loosening the cap unit and dropping the body.

# How to Use

## ⚠ Caution

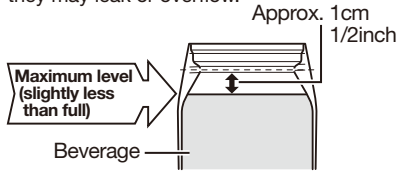


**Be sure to set the cap unit in a proper position.**

Contents may leak and cause soiling.

**Do not fill the product above the maximum level shown below.**

If the contents exceed the specified line, they may leak or overflow.



**Drink all of the beverage as soon as possible.**

If a beverage is left inside for a prolonged period, gas may be produced by decomposition, increasing the pressure inside the body. This may prevent the lid from opening or cause the contents to spray out. There is also the danger that it may damage the cap unit and cause it or pieces of it to fly off.

**Check that the lid cap gasket and stopper gasket are attached and that there is no leakage of the beverage before using the product.**

There is a risk that the contents may leak, causing stains.

**Install only the parts intended for use with the product.**

If any other parts are installed, there is a risk that the contents may leak, causing stains.

**Be sure to clean the product immediately after use, especially after consuming sports drinks.**

Rinse the inside of the product well, even if you are going out, for example, and don't have time to wash it thoroughly. Mold, rust, or holes may appear.

**Keep the product in an upright position at all times in your bag to avoid leakage.**

Contents may leak if the product is laid horizontally.

**Make sure that there is no residual liquid in the straw before attaching the cap unit.**

If there is residual liquid, they may splash from the straw when the lid is opened and cause soiling.

**Make sure that there is no residual liquid in the body before removing the cap unit.**

If there is residual liquid in the body and straw, they may splash from the straw when the cap unit is removed and cause soiling.

## For can holder

**Before using the can holder, check its intensity.**

If the holder is not strong enough, it may come off and damaged. This may result in soiling of clothes or of the interior of the vehicle.

**When using a commercially available can holder, use the stationary type.**

If suspension holder that is attached to window or air conditioning outlet is used, it may come off. This may result in soiling of clothes or of the interior of the vehicle.



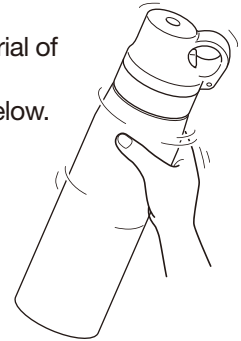
## Before the first use

### ● Cleaning

You may notice an unusual odor coming from the material of the product.

In this case, clean the product by following the steps below.

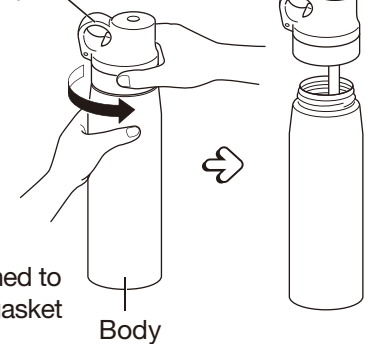
- (1) Check that the gaskets are attached.
- (2) Pour hot water into the body and securely close the cap unit.
- (3) Hold the body and gently shake it several times to rinse the inside thoroughly.  
(Do not shake it excessively. The hot water may splash out, potentially causing burns.)
- (4) Discard the hot water, and then clean each part.



1

**Turn the cap unit to remove it.**

Cap unit



- Check that the lid cap gasket is attached to the lid cap, and the stopper, stopper gasket and straw are attached to the lid body.

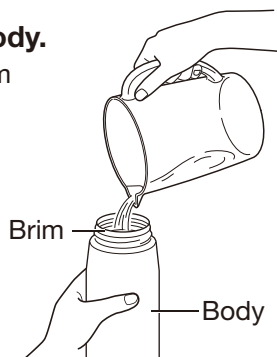
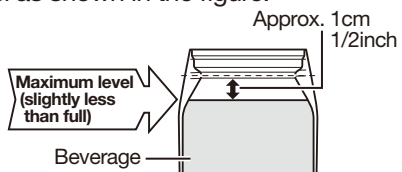
2

**To keep your beverage cool longer, first pour a small amount of cold water into the body and let it sit for one or two minutes.**

- Discard the cold water after precooling.

**3****Pour your cold beverage into the body.**

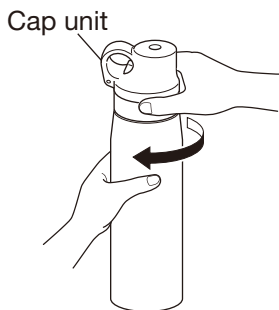
- Do not fill the product above the maximum level as shown in the figure.



- Do not insert large cubes of ice. Use small cubes or crushed ice.

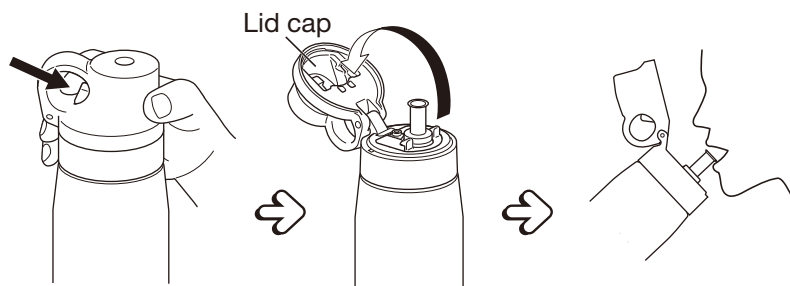
**4****Place the body in an upright position and turn the cap unit to close it.**

- Turn the cap unit as far as it will go to securely close it.

**5****Push the button to open the lid cap, and then drink the beverage.**

(1) Push the button to open the lid cap.

(2)

**5****6****After drinking the beverage, keep the body in an upright position and securely close the lid cap.**

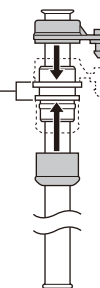
- When closing the lid cap tightly, press and hold the top of the lid cap until you hear a click.

**Caution**

- Make sure the product does not suffer any strong impact while carrying it. The lid cap may open.
- If you place the product in a bag, make sure it is upright. The contents may leak if you place it on its side.
- If you place the product in a bag, make sure the button stays away from any other items in the bag. The lid cap may open.
- Due to its structure, when the humidity is high, water droplets may form on the cap unit.
- Do not pull the straw gaskets. If the gaskets are detached, fit them securely in the proper directions.



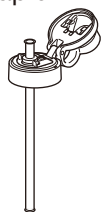
Please insert them correctly.

**6**

# How to Clean

- ◆ Clean the product and dry it thoroughly on the same day after every use.
- ◆ Use mild kitchen detergent (for table or cookware).
- ◆ Use a soft sponge, cloth or other suitable cleaning supplies.
- ◆ Clean the product thoroughly to prevent any odor.

Body Cap unit



Lid cap gasket  
(Remove and clean)



Stopper gasket  
(Remove and clean)



(1) Wash each part using a soft sponge and detergent diluted with water or lukewarm water, and then thoroughly rinse it with water. (Just rinse them instead of immersing them.)  
(2) Wipe the water off with a dry cloth and dry them thoroughly.

## Caution

- Do not immerse the body and lid cap when washing them. (Water may enter.)
- After washing the whole body, immediately use a dry cloth to wipe off the moisture on its outer surface. Not wiping off all droplets could leave water stains or cause rust and other marks.
- Do not use thinners, cleansers, bleaches, chemical wipes, metallic scrubbing brushes, or nylon scrubbing brushes.
- Do not use a dishwasher or dish dryer, and do not wash with boiling water.
- Be sure to attach the spout, stopper, and gaskets.
- Dry the parts completely after removing stains if the product has not been used for a long time.

## If stains appear inside the main body

When red, rust-like spots or a substance that is rough to the touch appears

Such stains can be caused by minerals in water, such as calcium, magnesium, and iron. When cleaning these substances, please use citric acid, which is available at supermarkets and drug stores.

1. Dilute the citric acid (approximately 10 g) with lukewarm water, then pour it into the main body.
2. After 2 to 3 hours, wash the main body with a soft brush and then thoroughly rinse it.
3. Fully dry the main body.

## When an odor remains on the gasket

Depending on the beverage, the beverage odor may remain on the gasket. In this case, leave the gasket in boiling water for approximately 30 minutes. If the odor still remains, please purchase a new gasket (sold separately).

## When the gasket becomes stained

Depending on the beverage, the beverage color may remain on the gasket. There is no problem in using the gasket even if it becomes stained. If you are concerned about stains, please purchase a new gasket (sold separately).

## How to remove and attach the gasket

**Caution**

- Do not attach the gasket in the incorrect place or direction. The contents may leak.

### How to remove and attach the lid cap gasket

#### How to remove

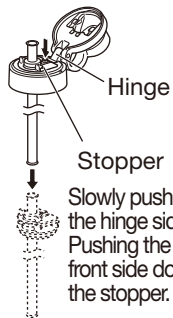


#### How to attach

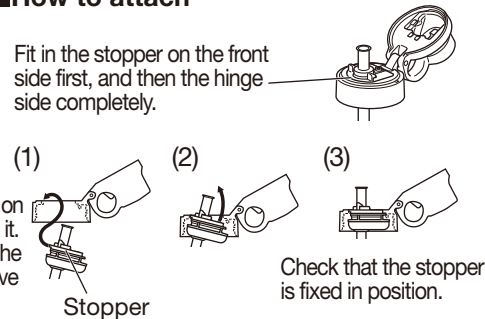


### How to remove and attach the stopper

#### How to remove

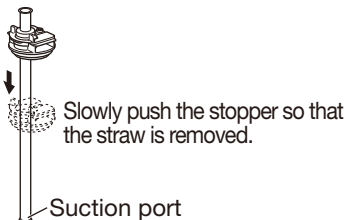


#### How to attach

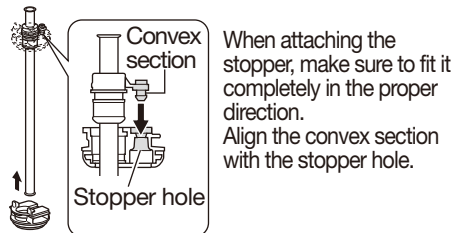


### How to remove and attach the straw

#### How to remove

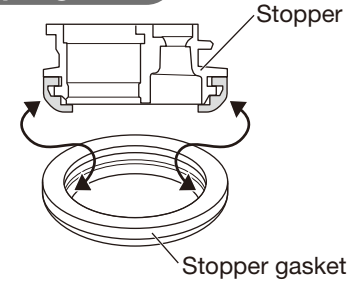


#### How to attach



## How to remove and attach the stopper gasket

Slowly remove the stopper gasket while holding its edge. When attaching the stopper gasket, make sure to fit it completely in the proper direction.



## Specifications

	0.50 L type
Capacity	0.50 L / 16.9 oz
Cold retention (6 hours)	Less than 8°C / 47°F
Size *	W 6.6 × D 7.0 × H 24.5 cm W 2.60 × D 2.76 × H 9.65 inch
Weight *	0.23 kg / 0.51 lbs

\* indicates an approximate value.

- ※ Cold retention has been calculated under the condition of adding cold water to the lower end of the stopper at 4°C±1°C / 39°F±2°F and leaving it in an upright position at a room temperature of 20°C±2°C / 68°F±4°F for 6 hours.
- ※ Capacity is the actual volume of water that can be stored in the product when the stopper is closed. This is not the “Maximum level” volume described in “Safety Precautions”.

## <About antibacterial processed>

MCS-A uses silver (Ag) antibacterial processing.

Testing laboratory : DAIWA CHEMICAL INDUSTRIES CO.,LTD.

EVALUATION TECHNICAL CENTER

Testing method : The material meets JIS Z 2801(ISO22196),

test for antimicrobial activity and efficacy

Subject area : Lid cap, lid body, stopper

Processing method : Kneading into plastic

Ingredient material : Ag inorganic antibacterial agent

Testing result : Antibacterial activity value 2.0 and more