

Replacing and Purchasing Consumable Parts

The stopper is a consumable part. Check once a year for damage/deterioration.

If they are heavily stained or loose, replace them.

For replacement parts, contact customer service or the shop where you purchased this product.

Before Contacting Customer Service

The utmost measures have been taken to ensure the quality of this product. However, should the product be defective, contact your dealer and provide the following information.

1. Product name
2. Model number (bottom of the product) • Type of stopper
3. Description of trouble (As detailed as possible)
4. Purchase date

Feel free to send any questions or comments about this product to the shop where you purchased it.

※ For the purpose of performance improvement, designs, specifications and parts shown in this publication are subject to change without notice.



TIGER CORPORATION

Head Office: 3-1 Hayami-cho, Kadoma City, Osaka 571-8571, Japan

TIGER CORPORATION HONG KONG LIMITED

Rm. 1006B, 10/FI., Join-in Hang Sing Centre, 71 - 75 Container Port Road, Kwai Chung, N.T.

Tel: (852) 2418-0912 Fax: (852) 2418-0911

URL : <https://tiger-corporation.hk>

TIGER CORPORATION U.S.A.

1815 W 205th Street, Unit 106, Torrance, CA 90501

Tel: 1-866-55-TIGER (84437)

Email: support@japantigercorp.com

URL : <https://www.tiger-corporation.com/en/usa>



MODEL
MCS-A1

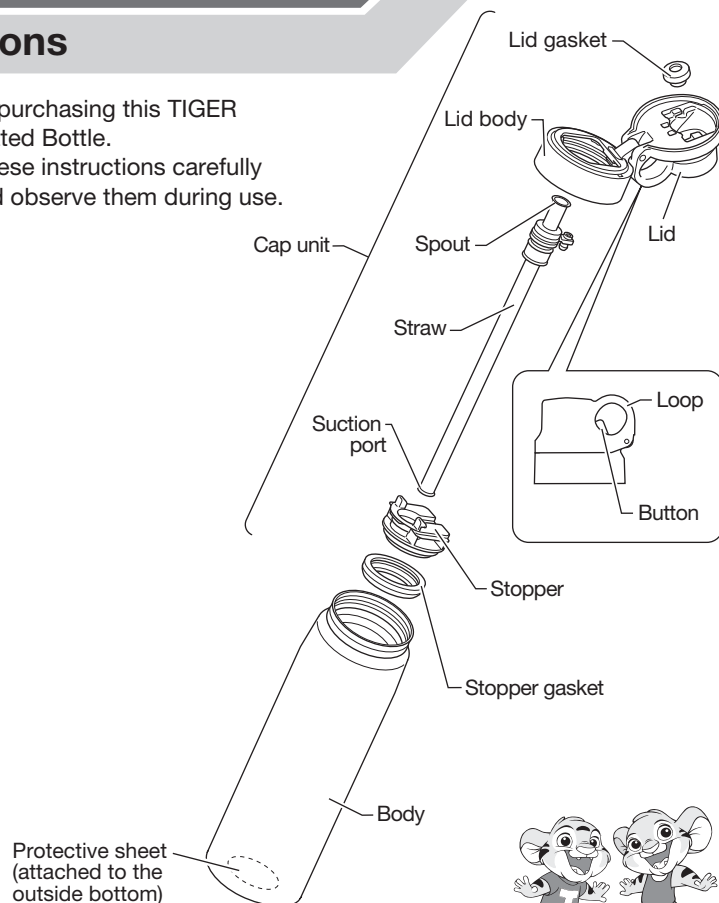
For household use

Vacuum Insulated Bottle

Cold drinks only

Instructions

Thank you for purchasing this TIGER Vacuum Insulated Bottle. Please read these instructions carefully before use and observe them during use.



*Make sure that all parts are present before use.

Safety Precautions

Be sure to follow all instructions.

- ◆ All safety instructions described below are intended to protect the user and other individuals from physical harm and household damage.
- ◆ Safety instructions are classified and described according to the level of harm and damage caused by improper use, as shown below.



This symbol indicates there is a possibility of death or serious injury.



This symbol indicates there is a possibility of injury or damage to property.

Description of Symbols



This symbol indicates a prohibited action.



This symbol indicates an action that must be taken or an instruction that must be followed.



Warning

This symbol indicates there is a possibility of death or serious injury.



Keep out of reach of children. Do not allow children to play with the product.

There is a risk of burns* or other injuries.

* When used products that can keep hot.



Do not walk with the straw in your mouth.

There is a risk of injury if you fall.



Caution

This symbol indicates there is a possibility of injury or damage to property.



Do not disassemble or attempt to repair this product.

There is a risk of product failure or accident.

Do not place the product on its side.

The contents may spill out. When putting the product in a bag or other container, place the product in an upright position.

Do not use the product to hold anything other than beverages.

If drank by accident, there is a risk of burns*, other injuries, or other damage.

* When used products that can keep hot.

Do not place the product near stoves, open flames, or other sources of extreme heat.

There is a risk of burns or deformation or discoloration of the product.

Do not heat the product in a microwave oven.

There is a risk of failure of the microwave due to sparking. There is also a risk of burns or deformation or discoloration of the product.

Do not put the product in a freezer.

The beverage may leak, the product may be damaged, or the performance of the product may decrease.

Do not knock over, drop, or strike the product or expose it to excessive shocks or vibration.

There is a risk of damage to the product, reduction of its performance, rusting, paint/printing/plating peeling*, or leakage of contents.

* For products that are painted, plated, or include printing.

Do not remove the protective sheet applied to the bottom of the product.

Removing it may decrease the product's performance.



Caution

This symbol indicates there is a possibility of injury or damage to property.



Do not scratch or rub the body, parts, or seals with fingernails or hard objects. Doing so may cause damage or peeling.

Do not use the product in a moving vehicle.

This may result in burns* or soiling of clothes or of the interior of the vehicle. Using the product while you are driving is very dangerous, as you may be distracted.

* When used products that can keep hot.

Do not pour a beverage into the bottle while the cap unit is in place.

The beverage may overflow or spill, causing burns* or injuries to the skin. It may also cause scratching or deformation of the product.

* When used products that can keep hot.

Do not put hot beverages in the product.

There is a risk of leakage or burns.

Do not put the product in a bottle sling, bottle boot or bag when its body is wet. There is a risk of rust, odors, or stains.

Do not carry together with a PC, mobile phone, digital camera, or other electronic device.

If the beverages leak, it could cause damage and malfunctions in electronic devices.

Never put the following things in the product.

● Dry ice, carbonated beverages, etc.

The pressure inside the product may increase, causing the lid to become stuck, the beverage to spray out, or parts to be damaged and fly off, resulting in injuries or stains.

● Milk, dairy products, certain fruit juices, etc.

The contents may decay or spoil. Leaving such beverages inside the product may create gases that raise the pressure inside the product. This can cause the lid to become stuck, the contents to spray out, or parts to be damaged and fly off, resulting in injuries or stains.

● Soups or beverages containing large amounts of salt.

The contents may decay or spoil, the product may rust, or the performance of the product may decline.

● Tea leaves, peeled fruit, etc.

They may cause clogging, resulting in leakage.

Do not hang the product from things by attaching it via the handle or loop attached to the lid with a metal clasp, string, or similar object

The body may fall, resulting in injury or damage.

Do not swing the product around by the body or cap unit.

The product may strike other people or objects, resulting in injury or damage. If the cap unit is not properly attached or turned in the direction that loosens it or the product is subjected to strong impacts or vibration, the cap unit may come off, causing the body to fall and resulting in injury or damage.

Do not open or close the cap unit or lid if the product is tilted.

The beverage may overflow or leak, causing stains.

Do not use chlorine bleach.

Doing so may result in rust, paint/printing/plating peeling*, or holes.

* For products that are painted or include printing or plating.

Do not use paint thinner, benzene, metal scrubbing brushes, polishing powder, cleansers, or similar substances.

Doing so may result in rust, scratches, or poor performance.

Do not use the product if you can hear water moving around* within the double-layer vacuum structure (vacuum layer) of its body.

Drinking from the product may cause you to feel unwell if water from the vacuum layer seeps into the interior of the product. In the case of the heat retention type, there is a risk of burns caused by the body heating up when hot beverages are poured into the product.

* A rattling sound may be heard when shaking its body. This is caused by rubbing of metallic foil placed inside the body to improve the heat retention effect, but it poses no problems with respect to usage.

<How to check heat retention effect>

Fill the body with hot water and touch the center of the bottom of the body after about five minutes. If the body is hot, discontinue use of the product, as it has no heat retention effect.

How to Use

Caution



When using the product, check that the lid gasket and stopper gasket are attached and that there is no leakage of the beverage.

There is a risk of the contents leaking, causing burns* or stains. If leakage occurs, parts (lid gasket, stopper gasket, etc.) may not be attached correctly, the cap unit may not be attached securely, or the product may be damaged.

* When used products that can keep hot.

Install only the parts intended for use with the product.

If any other parts are installed, there is a risk that the contents may leak, causing burns* or stains.

* When used products that can keep hot.

Be careful not to tip over the product when pouring beverages into it.

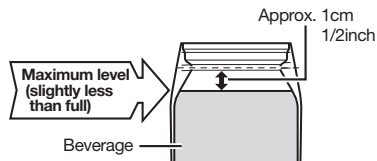
The beverage will spill out, and there is a risk of burns*, injuries, scratches, or deformation.

* When used products that can keep hot.

Be sure to only fill the product up to the maximum level shown in the diagram.

If the contents exceed the specified level, they may overflow and cause burns* or stains.

* When used products that can keep hot.



Check that the straw is empty when attaching or removing the cap unit.

If it is not empty, the contents may be expelled from the straw when the lid is opened or the cap unit is removed, causing stains.

This symbol indicates there is a possibility of injury or damage to property.

Observe the following when placing the product in automobile drink holders.

● Check that the product fits stably in the holder and that the holder is sufficiently strong.

● When using an aftermarket drink holder, use a stationary type.

If the product falls over or tilts or the drink holder breaks or is damaged, there is a risk of burns*, injuries, accidents, or soiling of property and the interior of the vehicle.

* When used products that can keep hot.

* The product may not fit depending on the vehicle model or type of drink holder.

Consume beverages as soon as possible.

If they are left in the bottle for a long time, gases may be generated due to spoilage, raising the pressure inside the product and causing the lid to become stuck or the beverage to spurt out. Furthermore, parts may be damaged and fly off, causing injuries and stains.

Be sure to clean the product immediately after use. Even if you are out and cannot clean it fully, immediately rinse out the inside of the product with water after use.

Failure to do so may result in mold, rust, holes, or other problems.

Check that the lid is securely attached with the product in an upright position.

There is a risk that the beverage may leak, causing burns* or stains.

* When used products that can keep hot.

Due to the structure of the product, condensation may occur if cold beverages are put in it, generating water droplets on the stopper.



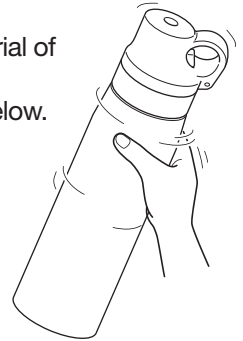
Before the first use

● Cleaning

You may notice an unusual odor coming from the material of the product.

In this case, clean the product by following the steps below.

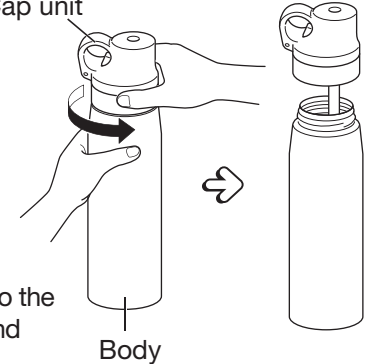
- (1) Check that the gaskets are attached.
- (2) Pour hot water into the body and securely close the cap unit.
- (3) Hold the body and gently shake it several times to rinse the inside thoroughly.
(Do not shake it excessively. The hot water may splash out, potentially causing burns.)
- (4) Discard the hot water, and then clean each part.



1

Turn the cap unit to remove it.

Cap unit



- Check that the lid gasket is attached to the lid, and the stopper, stopper gasket and straw are attached to the lid body.

2

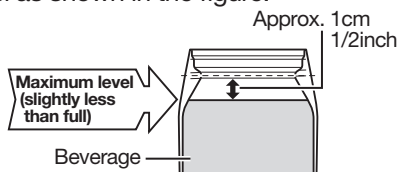
To keep your beverage cool longer, first pour a small amount of cold water into the body and let it sit for one or two minutes.

- Discard the cold water after precooling.

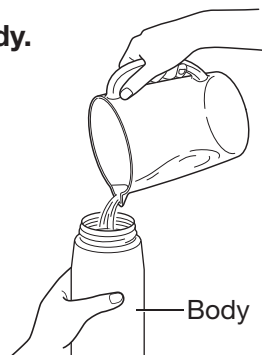
3

Pour your cold beverage into the body.

- Do not fill the product above the maximum level as shown in the figure.



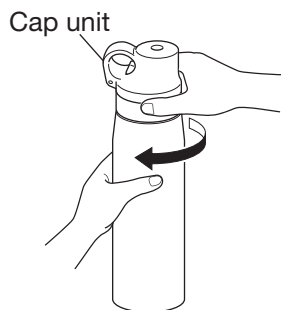
- Do not insert large cubes of ice. Use small cubes or crushed ice.



4

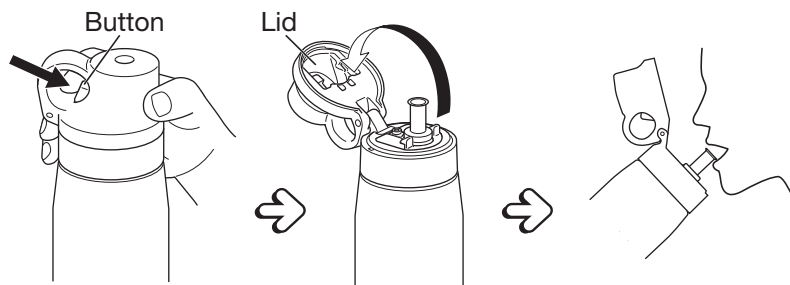
Place the body in an upright position and turn the cap unit to close it.

- Turn the cap unit as far as it will go to securely close it.



5

Push the button to open the lid and then drink the beverage.



6

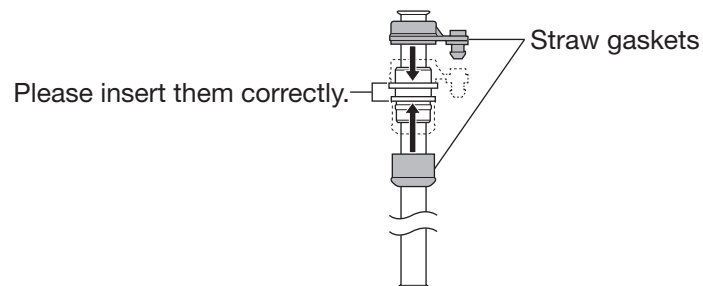
After drinking the beverage, keep the body in an upright position and securely close the lid.

- When closing the lid tightly, press and hold the top of the lid until you hear a click.



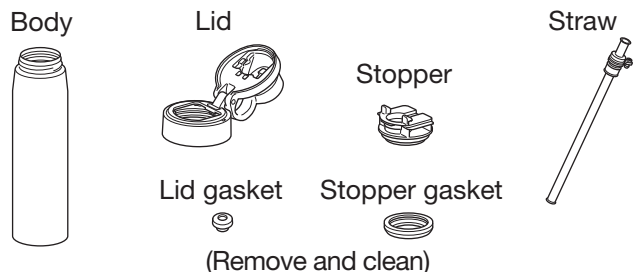
Caution

- Make sure the product does not suffer any strong impact while carrying it. The lid may open.
- If you place the product in a bag, make sure it is upright. The contents may leak if you place it on its side.
- If you place the product in a bag, make sure the button stays away from any other items in the bag. The lid may open.
- Due to its structure, when the humidity is high, water droplets may form on the cap unit.
- Do not pull the straw gaskets. If the gaskets are detached, fit them securely in the proper directions.



How to Clean

- ◆ Clean the product and dry it thoroughly on the same day after every use.
- ◆ Use mild kitchen detergent (for table or cookware).
- ◆ Use a soft sponge, cloth or other suitable cleaning supplies.
- ◆ Clean the product thoroughly to prevent any odor.



- (1) Wash each part using a sponge with diluted detergent water or lukewarm water, and then thoroughly rinse it with water.
- (2) Wipe the water off with a dry cloth and dry the parts thoroughly.

You can check a video on how to clean the product.

*Product model used in this video is MCS-A050 which has a lid with same structure as MCS-A1.

Caution

- Do not soak the body and cap unit when washing them. Water may enter. (Except gaskets)
- After washing the whole body, immediately use a dry cloth to wipe off the moisture on its outer surface. Not wiping off all droplets could leave water stains or cause rust and other marks.
- Do not use thinners, cleansers, bleaches, chemical wipes, metallic scrubbing brushes, or nylon scrubbing brushes.
- Do not use a dishwasher or dish dryer, and do not wash with boiling water. (Except gaskets)
- Be sure to attach the stopper, straw and gaskets.
- Dry the parts completely after removing stains if the product has not been used for a long time.
- Do not use boiling water. (This does not apply to the inside of the body or the gaskets.)

If stains appear inside the body

When red, rust-like spots or a substance that is rough to the touch appears

Such stains can be caused by minerals in water, such as calcium, magnesium, and iron. When cleaning these substances, please use citric acid, which is available at supermarkets and drug stores.

1. Dilute the citric acid (approximately 10 g) with lukewarm water, then pour it into the body.
2. After 2 to 3 hours, wash the body with a soft brush and then thoroughly rinse it.
3. Fully dry the body.

When an odor remains on the gasket

Depending on the beverage, the beverage odor may remain on the gasket. In this case, leave the gasket in boiling water for approximately 30 minutes. If the odor still remains, please purchase a new gasket (sold separately).

When the gasket becomes stained

Depending on the beverage, the beverage color may remain on the gasket. There is no problem in using the gasket even if it becomes stained. If you are concerned about stains, please purchase a new gasket (sold separately).

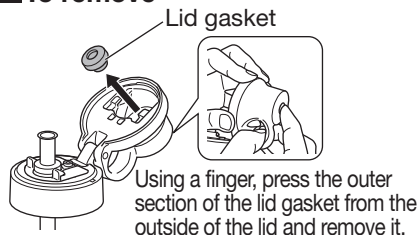
Removing and attaching the gasket

Caution

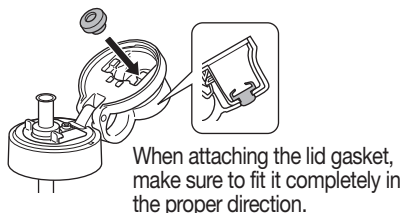
- Do not attach the gasket in the incorrect place or direction. The contents may leak.

Removing and attaching the lid gasket

To remove

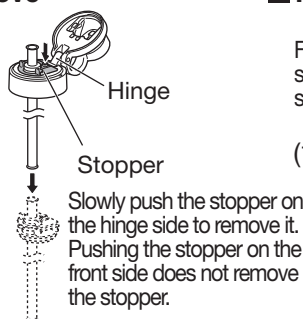


To attach

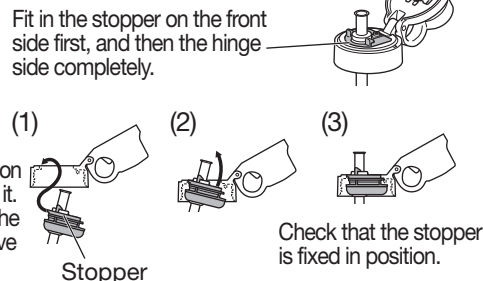


Removing and attaching the stopper

To remove

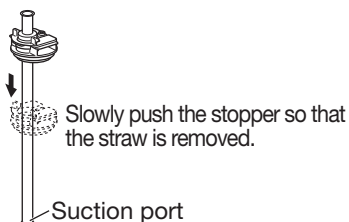


To attach

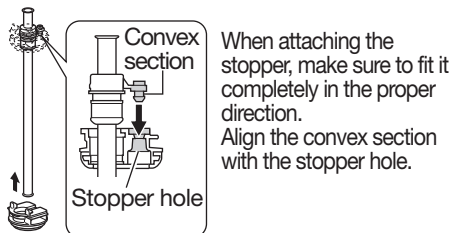


Removing and attaching the straw

To remove

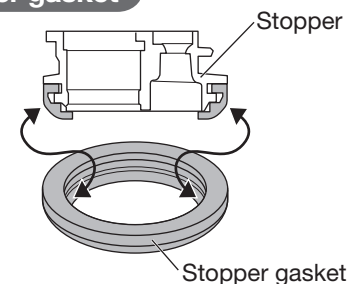


To attach



Removing and attaching the stopper gasket

Slowly remove the stopper gasket while holding its edge. When attaching the stopper gasket, make sure to fit it completely in the proper direction.



Specifications

	0.50 L type
Capacity	0.50 L / 16.9 oz
Cold retention (6 hours)	Less than 8°C / 47°F
Size *	W 6.6 × D 7.0 × H 24.5 cm W 2.60 × D 2.76 × H 9.65 inch
Weight *	0.23 kg / 0.51 lbs

* indicates an approximate value.

※ Cold retention has been calculated under the condition of adding cold water to the lower end of the stopper at 4°C±1°C / 39°F±2°F and leaving it in an upright position at a room temperature of 20°C±2°C / 68°F±4°F for 6 hours.

※ Capacity is the actual volume of water that can be stored in the product when the stopper is closed. This is not the “Maximum level” volume described in “Safety Precautions”.